

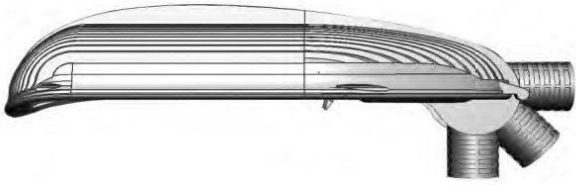
## Outdoor LED Street PARKING

Sea lion lamp is the latest product . This series product has accepted many tests and demonstration in ten of heat radiation, luminous intensity distribution, industry and mechanical design. Its middle section is made with standard 6063 radiation aluminum;

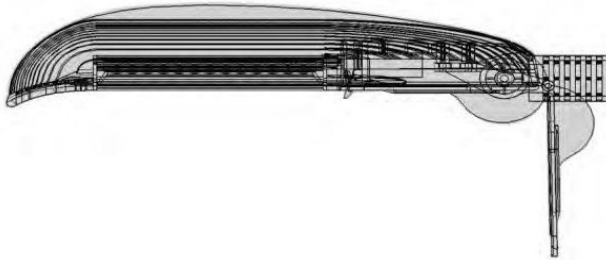
its two ends are mode with ZL102 cast aluminum. In order to promote the radiation in the middle section and the power supply, the middle section is equipped with ventilation and drainage channels; the top is equipped with ventilation measures. The above

configuration assures an all-around at the middle section where the LED lamp is installed. This is a creative design which achieves excel let heat radiation effect. The arrangement of ladder-shaped three groups achieves outstanding luminous intensity distribution and extends the lighting reach along the road, for more even illuminance and large width. At the aspect of structure, the separation of the light source from the power supply and the downward opened cover plate assure easy installation, wiring and maintenance. As a relatively ideal large-power LED street lamp, it could be used at the urban are rial traffic line.

## Specification

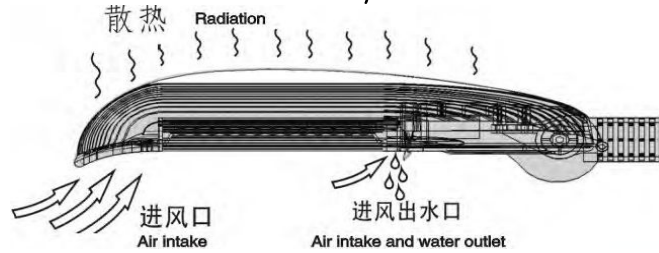


Angle-variable regulation  
Angle-variable regulation by rotation for easy installation

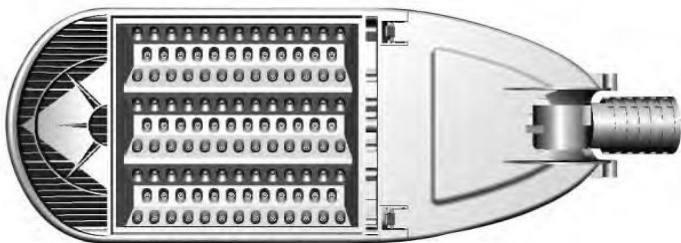


Panel opened

User-oriented installation for easy maintenance



Logic radiation structure to maintain the lighting fitting at best status for long term



Balanced luminous intensity distribution achieved by arrangement of ladder-shaped three groups of lamps conforming to road lighting design standard for higher uniformity.

Other options

Model	Luminous efficacy (lm/w)	Luminous flux(lm)	Centre illumination		Illumination range(m)	NW (kg)	GW (kg)	Package size	Power (w)	Color temperature(k)	Color rendering index
			H(M)	lx)illumination							
OB-220V-RR/RZJG-100W	85-95	8500-9500	9-10m	26-33	30-35	16.5	17	93*37*25cm	100	2700-6500	80
OB-BDZ 20V-RR/RZJG-120W	85-95	10200-11400	10-12m	30-40	35-37	16.5	17	93*37*25cm	120	2700-6500	80
OB-BDZ 60-RR/RZJG-150W	85-95	13600-15200	10-12m	34-48	37-39	17	17.8	93*37*25cm	160	2700-6500	80
OB-BDZ 20V-RR/RZJG-180W	85-95	15300-17100	10-12m	36-50	37-40	17.5	18.5	96.5*37*28cm	180	2700-6500	80

## Specification

Model No.	Power
LED Quantity	120Pcs
Total Power	120W
LED Color Temperature	White(Warm White,Neutral White,Cool white)
Color Rendering Index:	80Ra
Input Voltage:	86~277V, 12V 24V DC
Frequency:	50~60HZ
Power factor:	>0.96
Luminous Flux:	13200Lm
Life Time:	50,000Hours
Casing Material:	Aluminum alloy die casting
Ambient Temp:	-30~40°C
Moisture allowed	≤95%
Temp up at work	20°C
IP Rate	IP65
Net Weight	16KGS
Packing	1pc/Carton 91*37*28CM
Power Efficiency	88%-91%

RoHS  
Compliant



IP65



50,000 hrs



### Specification:

Color Rendering Index: >80Ra

Input Voltage: AC85~265V

Storage Temperature: -40~50°C

Model No.	Power	Voltage	Color Temperature	Lumen Output	Beam Angle	Life Time	Weight
SS-ST-850*325mm-120P-HP-120W	120W	AC100~260V	3000K/4000K/5000K/6000K	13200Lm(CW)	120°	50,000	16KG Pc

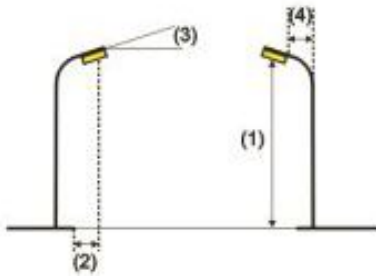
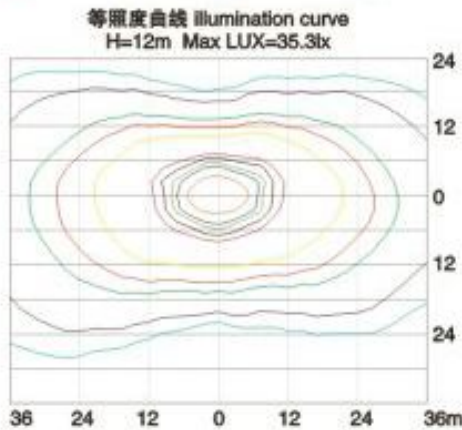
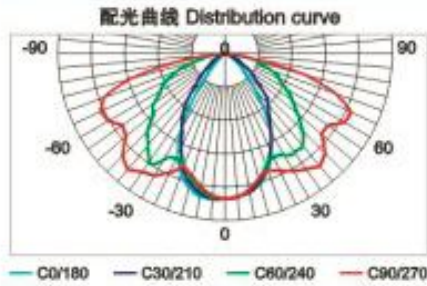
### Technical information:

Distribution curve

illumination curve H=12m Max LUX=35.31x

# Outback

Lighting Technology Limited Prismtech LED Outback Light Limited  
Specification

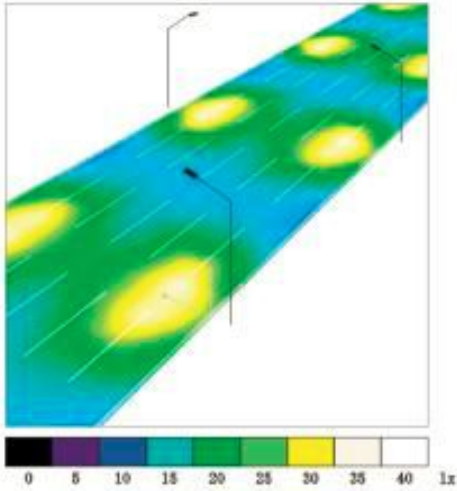


柏油路宽 road width	安装高度(1) height	挑臂(4) boom length	安装仰角(3) angle	灯杆间距 pole distance	维护率 maintenance rate	平均照度 average lumiance	总均匀度 $U_0(L_{50})$ over uniformity	纵向均匀度 $U_L$ longitudinal uniformity
24m	12m	1.5m	15度	30米	0.8	1.11cd/m <sup>2</sup>	0.6	0.8
平均照度( $E_{av}$ ) average illumiance	最大照度( $E_{max}$ ) max illumiance	最小照度( $E_{min}$ ) min illumiance	最小照度/平均照度 uniformity of road surface illumiance	周边照度系数(SR) surround illumiance coefficient	眩光指数TI threshold increment			
19lx	34lx	11lx	0.594	0.5	8%			

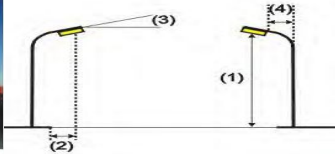
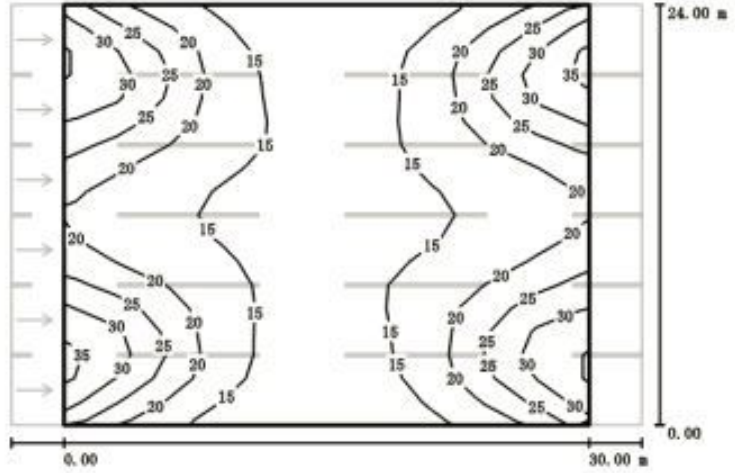
## Specification



average illuminance	max illuminance	min illuminance	uniformity of road surface illuminance	surround illuminance coefficient	threshold increment
19lx	34lx	11lx	0.594	0.5	8%



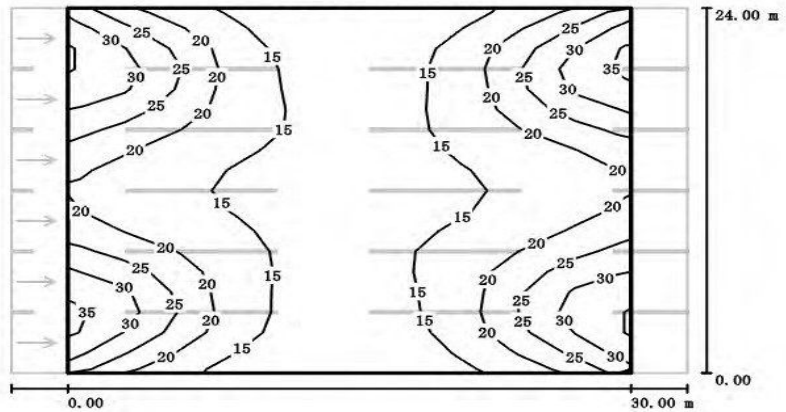
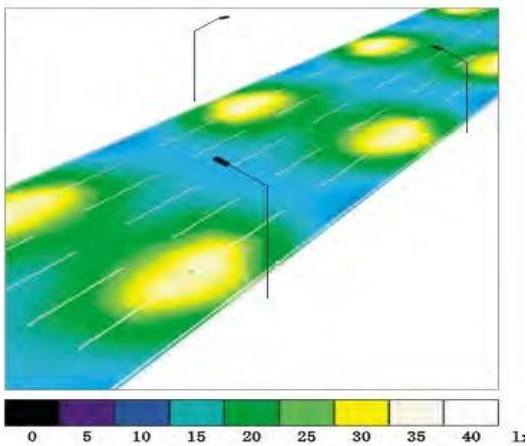
道路等照度图 isolines



Road width	height	boom length	angle	pole distance	maintenance rate	average luminance	over uniformity	longitudinal uniformity
24m	12m	1.5m	15 度	30 米	0.8	1.11cd/m <sup>2</sup>	0.6	0.8

Average illuminance	max illuminance	min illuminance	uniformity of road surface illuminance	Noninsurance coefficient	threshold increment
19lx	34lx	11lx	0.594	0.5	8%

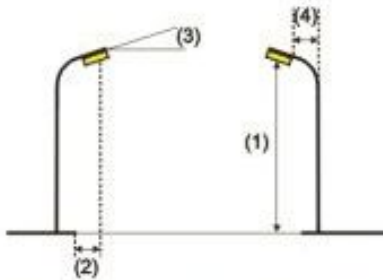
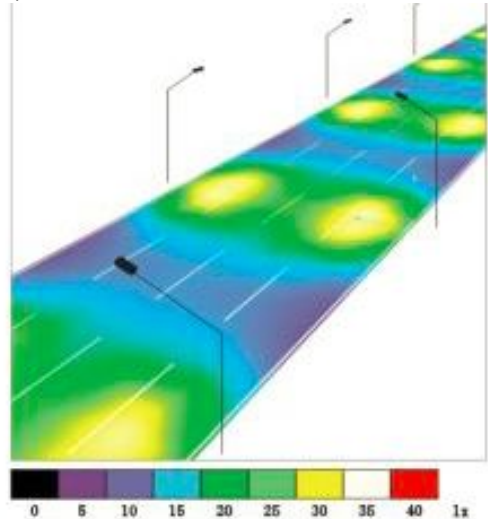
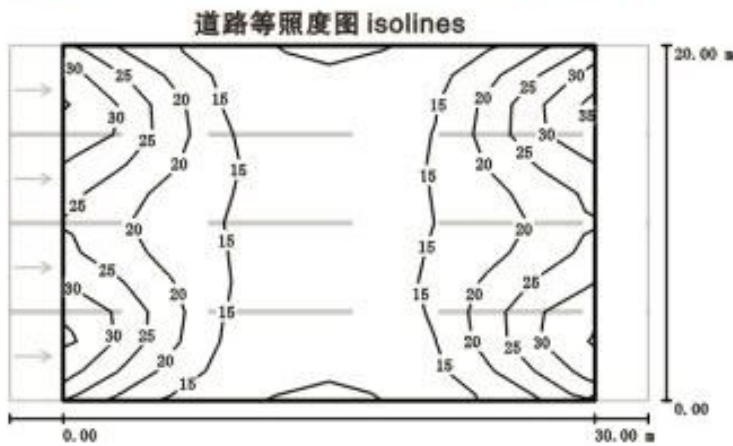
### Isolines



## Specification

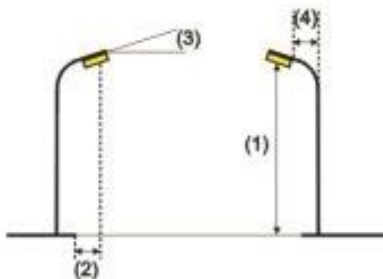
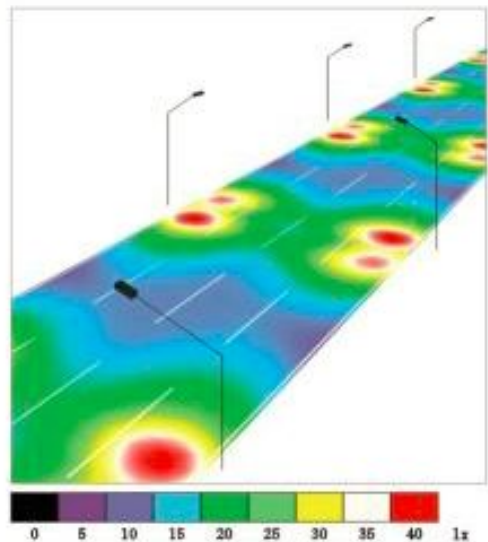
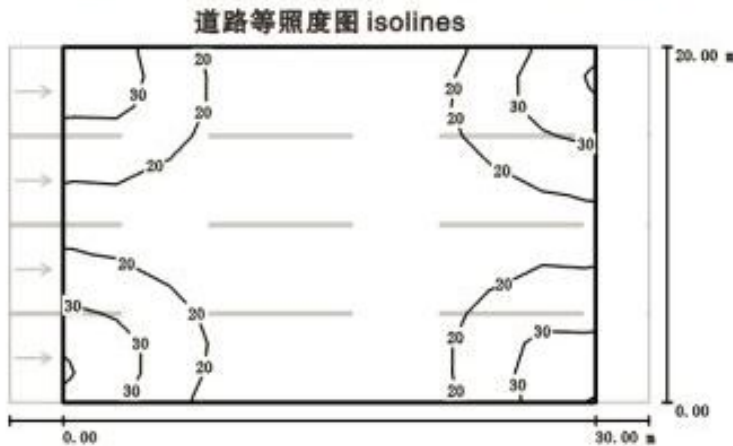
Height	Center Illumination(lux)
<b>h=10m</b>	<b>≥38</b>
<b>h=12m</b>	<b>≥25</b>

Comparison between LED Street light and High-pressure Sodium Lamp in terms of illumination



柏油路宽 road width	安装高度(1) height	挑臂(4) boom length	安装仰角(3) angle	灯杆间距 pole distance	维护率 maintenance rate	平均照度 average luminance	总均匀度 $U_0(U_{av})$ over uniformity	纵向均匀度 $U_L$ longitudinal uniformity
20m	10m	1.5m	18度	30米	0.8	1.08cd/m <sup>2</sup>	0.6	0.8
平均照度( $E_{av}$ ) average illuminance	最大照度( $E_{max}$ ) max illuminance	最小照度( $E_{min}$ ) min illuminance	最小照度/平均照度 uniformity of road surface illuminance	周边照度系数(SRF) surround illuminance coefficient	眩光指数TI threshold increment			
19lx	34lx	9.78lx	0.527	0.5	6%			

### 飞利浦250W 高压钠灯 / 250W High-pressure sodium lamp(PHILIPS)



柏油路宽 road width	安装高度(1) height	挑臂(4) boom length	安装仰角(3) angle	灯杆间距 pole distance	维护率 maintenance rate	平均照度 average luminance	总均匀度 $U_0(U_{av})$ over uniformity	纵向均匀度 $U_L$ longitudinal uniformity
20m	10m	1.5m	15度	30米	0.8	0.95cd/m <sup>2</sup>	0.5	0.5
平均照度( $E_{av}$ ) average illuminance	最大照度( $E_{max}$ ) max illuminance	最小照度( $E_{min}$ ) min illuminance	最小照度/平均照度 uniformity of road surface illuminance	周边照度系数(SRF) surround illuminance coefficient	眩光指数TI threshold increment			
19lx	39lx	10lx	0.529	0.6	5%			



Prismtech LED Outback Light Limited

Specification

---

---

Application:

---

Street, Garden ,Squares ,School ,Park ,Yards ,pavements