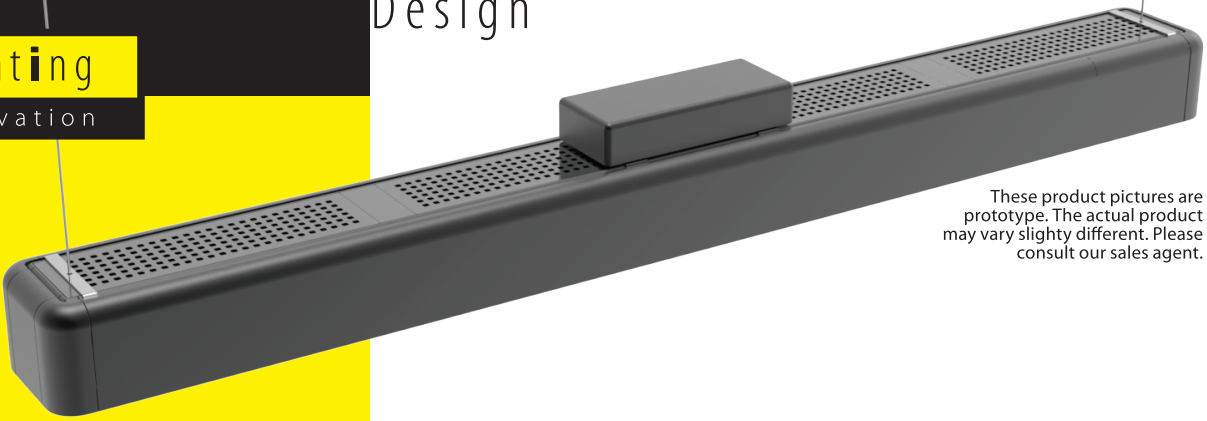




Modular Design

LED Lighting
design innovation



These product pictures are prototype. The actual product may vary slightly different. Please consult our sales agent.

LED Linear Highbay Series

OB-LHB-PL - 50w | 100w | 150w | 200w



200w



150w



100w



50w

Power-Driver
Supplied by:



PHILIPS chip
inside:



Features

High reflect efficiency: This LED series lighting adopt "Light Engine LED Module" with highgrade lenses that equate to a higher reflective efficiency. Combined with an optimal exchange power supply (Driver) and LED board with minimal maintenance needed.

High CRI>80: High light efficiency, high power factor, energy saving, environmentally friendly, sustainable high-performance.

Multiple option for installation mouting: This LED can be installed in different mounts/bracket, flexible to different lighting situation.

Anti-shock, easy to transport, it's safer and more reliable than traditional fluorescent lamps. The use of aluminium extrusion heat-sink makes the heat-dissipation better than other products. Fundamentally lightweight using cooling fins.



Outback
A+Prismtech Outback Lights Co.

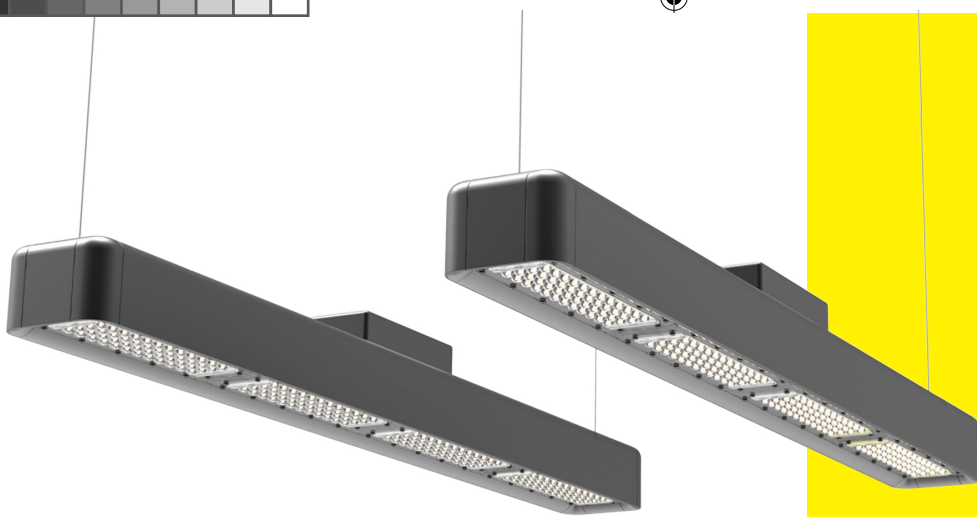
www.prismoutbacklight.com

Contact us NOW!

Tel: +86-755-8324 3047
Fax: +86-755-8324 3048

Skype: prismoutbacklight
Email: annie.chen@prismoutbacklight.com





Outback
A+Prismtech Outback Lights Co.

LED Linear Highbay Series

OB-LHB-PL - 50w | 100w | 150w | 200w

Model	Input Wattage	Input Voltage Range V	Size	Delivered Lumens (lms)	IP Rating	Color Rendering Index CRI	Color Temperature CCT	Beam Spread	Life Rating
OB-LHB-PL - 50W	50w	100-265V AC	Height 83mm Width 296mm Thickness 116mm	5,000-5,600 Lms+ (Ta=25° C)	IP65	80	3000, 4000 5000, 6000 or 6500K	Batwing: 80 x 130° Flood beam: 120° 60°/90° / Asymmetric 60°x150°	50,000hrs
OB-LHB-PL - 100W	100w	100-265V AC	Height 83mm Width 565mm Thickness 116mm	10,000-12,000 Lms+ (Ta=25° C)	IP65	80	3000, 4000 5000, 6000 or 6500K	Batwing: 80 x 130° Flood beam: 120° 60°/90° / Asymmetric 60°x150°	50,000hrs
OB-LHB-PL - 150W	150w	100-265V AC	Height 83mm Width 836mm Thickness 116mm	15,000-18,000 Lms+ (Ta=25° C)	IP65	80	3000, 4000 5000, 6000 or 6500K	Batwing: 80 x 130° Flood beam: 120° 60°/90° / Asymmetric 60°x150°	50,000hrs
OB-LHB-PL - 200W	200w	100-265V AC	Height 83mm Width 1105mm Thickness 116mm	20,000-24,000 Lms+ (Ta=25° C)	IP65	80	3000, 4000 5000, 6000 or 6500K	Batwing: 80 x 130° Flood beam: 120° 60°/90° / Asymmetric 60°x150°	50,000hrs

Sample Applications:



Groceries, Convenient Store and similar type



Warehouse, Storage Room, etc.

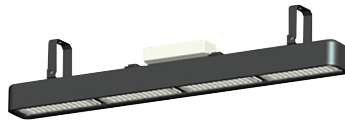


Parkinglot, Showroom and similar place.

Sample Applications Mounting:



Wall washer and surface mount



U-mount



Adjustable Wall Washer and Surface Mount



Bow Garden Light



Suspension



Ready out Wall Light



Surface Mount



Wall Washer



Higher Rod Ceiling mount

LED Lighting

design innovation

Contact us **NOW!**

Tel: +86-755-8324 3047
Fax: +86-755-8324 3048

Skype: prismoutbacklight
Email: annie.chen@prismoutbacklight.com

www.prismoutbacklight.com

